

SILENTAIRE
TECHNOLOGY

SA-COMPACT 106



General User and Maintenance Instructions

8614 Veterans Memorial Drive • Houston, TX 77088
800-972-7668 • 832-327-7452 • Fax 832-327-0668
sales@silentaire.com

Thank you and congratulations on the purchase of your PANTHER, the leader in the industry of portable air compressors.

The PANTHER is built to the highest quality standards which produces excellent efficiency. If you use it properly and maintain it according to this manual, it will perform to your fullest satisfaction for many years to come.

Please read this manual carefully and follow the instructions, it will guarantee you a troublefree operation.

A. Installation

1. After taking your **PANTHER COMPACT 106** out of its packaging, please check it carefully for any damages due to shipping.
2. Install the compressor on a flat surface in a **suitably sized, dry room** with **good ventilation**, where the temperature is not likely to rise above **94 Degrees Farenheit** (35 Centigrades).
4. Dispose of the Packing Material in compliance with the regulations in the country or state where the compressor is installed.

B. Safety

1. **Do not** use the **PANTHER Compact 106** for purposes other than those for which it has been designed.
2. **Do not** modify or repair the compressor while it is connected to the electric current or while the tank is still pressurized.



This "bolt of lightning" indicates uninsulated material within your unit may cause an electrical shock. For the safety of everyone please do not remove product covering.



The "exclamation point" calls attention to features for which you should read the enclosed literature closely to prevent operating and maintenance problems.



C. Operating Instructions



Fig. 1

1. Check that the automatic ON/OFF-Pressure Switch is in the **OFF**-position (or turned fully counter-clockwise, Fig. 1).
2. The PANTHER Compact 106 is available in different electric versions:
115V/60Hz, 115V/50Hz, 230V/60Hz and 230V/50Hz.
Check to see if the outlet of your electric supply **corresponds** to your compressor version.
Notice: the 50 Hz versions have a 20 % decrease of airflow compared to the 60 Hz versions.
3. Connect the equipment for your application to the outgoing 1/4" male fitting on the Filter/Regulator (Fig. 2). To keep the connecting fitting from leaking air you should always apply **Teflon Tape** to the thread of the fitting.



4. Plug the cord into a **properly installed and grounded** outlet of electric supply **corresponding to your purchased PANTHER compressor** (the unit should be grounded for your own safety; in the event of a short it reduces the risk of an electric shock). If you need an extension cord for you to operate the unit, only use a **heavy duty** extension cord, no longer than **20 feet or 6,0 m** (no household cord; it might cause a loss of power and the damage of electrical components).
Notice: Tampering with the Power Cord or Grounding Terminal will void warranty.
5. Turn the knob on the automatic **ON/OFF-Pressure Switch** (Fig. 1) to the **On**-position (clockwise) until it stops. The Pressure Switch has been set to

automatically start and stop the compressor at the preset pressure level. Leave it in the ON-position until you want to turn off your compressor.

Note: Never remove or repair the ON/OFF-switch while the compressor is connected to the electric outlet!

6. After the compressor has run for a complete cycle to pressurize the tank and then shut off, you set the desired pressure with the **Regulator**.

Simply lift the knob on it until it unlocks, then turn it **clockwise to increase** the pressure, until the Pressure Gauge for the line pressure shows the desired pressure. To **reduce** the pressure also lift the knob on the Regulator and turn it **counterclockwise**.

Note: Never open the Regulator completely, it would ruin your compressor in a short period of time. If you notice that your compressor is running with a cycle of more than 50% of the time, this indicates that you might have an air-leak in your system or that your compressor is too small for your application.

7. To turn off your compressor, simply turn the knob on the **Pressure Switch** (Fig. 1) to the **OFF**-position (counterclockwise). If the electrical power is interrupted while the compressor is in operation and it fails to restart after the power comes back on, turn the knob on the Pressure Switch to the OFF-position; this will release any pressure in the line and enable the compressor to restart again.

Notice: The **Safety Relief Valve** is a standard feature on your compressor. This valve opens automatically if the tank pressure goes beyond a safe level.

Do not attempt to adjust or remove this device!

D. Maintenance

On your PANTHER Compact 106 there are a few parts that need your attention for proper maintenance:

1. **Air Intake Filter:**
(Fig. A)
 - must be kept clean for easy airflow to the compressor
 - dirty or clogged filters must be replaced or cleaned thoroughly in a detergent soap and water solution
 - replacing or cleaning under normal conditions is necessary every 10-15 months
 - **Never operate the compressor without the Air Intake Filter in place**

2. **Pressure Tank:**
(Fig. C)
 - Check the Pressure Tank **daily** for water inside
 - Unplug the compressor and release all compressed air from the tank by opening the Drain Plug.

 - Tilt the unit towards the plug to allow the water to drain
 - Air Hose and other accessories should also be drained on a regular basis

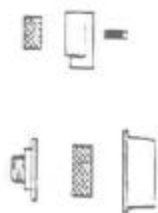


Fig. A

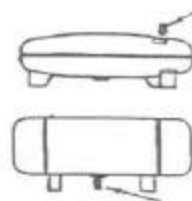


Fig. C

E. Troubleshooting

For any kind of repair or replacement **only use original spare parts!** They are available at every authorized service center. Imitation spare parts may irreparably damage your compressor. When asking for information or service please always quote the Model, Type and Serial-Number of your compressor. This information is on a label on your compressor.

Symptom:	Cause:	Remedy:
Pressure drops in the tank	Air leak at connectors	Pressurize the tank to maximum pressure, switch it off and control all the fitting and hose connectors with a soap/water solution for leaks (bubbles) and repair the leaks (tighten connections or replace seals e.g.).
Pressure Release Valve is leaking while the compressor is idle	Seal of Check-Valve is defective	Drain tank-pressure, remove the plug of the check-valve and clean the seat, if necessary replace the seal and remount all the components.
Pressure Release Valve is leaking while the compressor is running	Pressure Release Valve is defective	Replace Pressure Release Valve.
The compressor keeps running even though the max. pressure has been reached, the Safety Release Valve is releasing air	Pressure Switch is defective	Replace Pressure Switch.
The compressor does not reach the preset pressure and overheats	Air leaks at connectors or defective compressor head (gasket or valve)	Check for air leaks and repair them, If you think there might be a defect in the compressor head, contact a specialized technician.
The compressor is noisy and produces a metallic sound	Broken Rubber Mounts or defectiv bearing in compressor pump	Replace the Rubber Mounts. If metallic noise does not disappear, contact a specialized technician.

If your PANTHER has a different symptom of a fault from the above troubleshooting chart-list, please contact a specialized technician.